

Piedmont Physicians Rheumatology

Understanding Kidney Involvement in Lupus

Wambui Machua, MD

Director of Rheumatology Clinical Research

Wambui.machua@piedmont.org



Real change lives here

Overview: Lupus

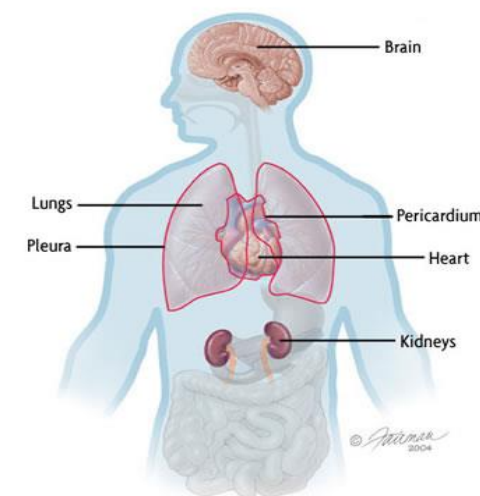
LUPUS: Latin for “wolf”

- 13th-century physician – Rogerius used the word to describe erosive fascial lesions reminiscent of a wolf’s bite



Overview: Lupus

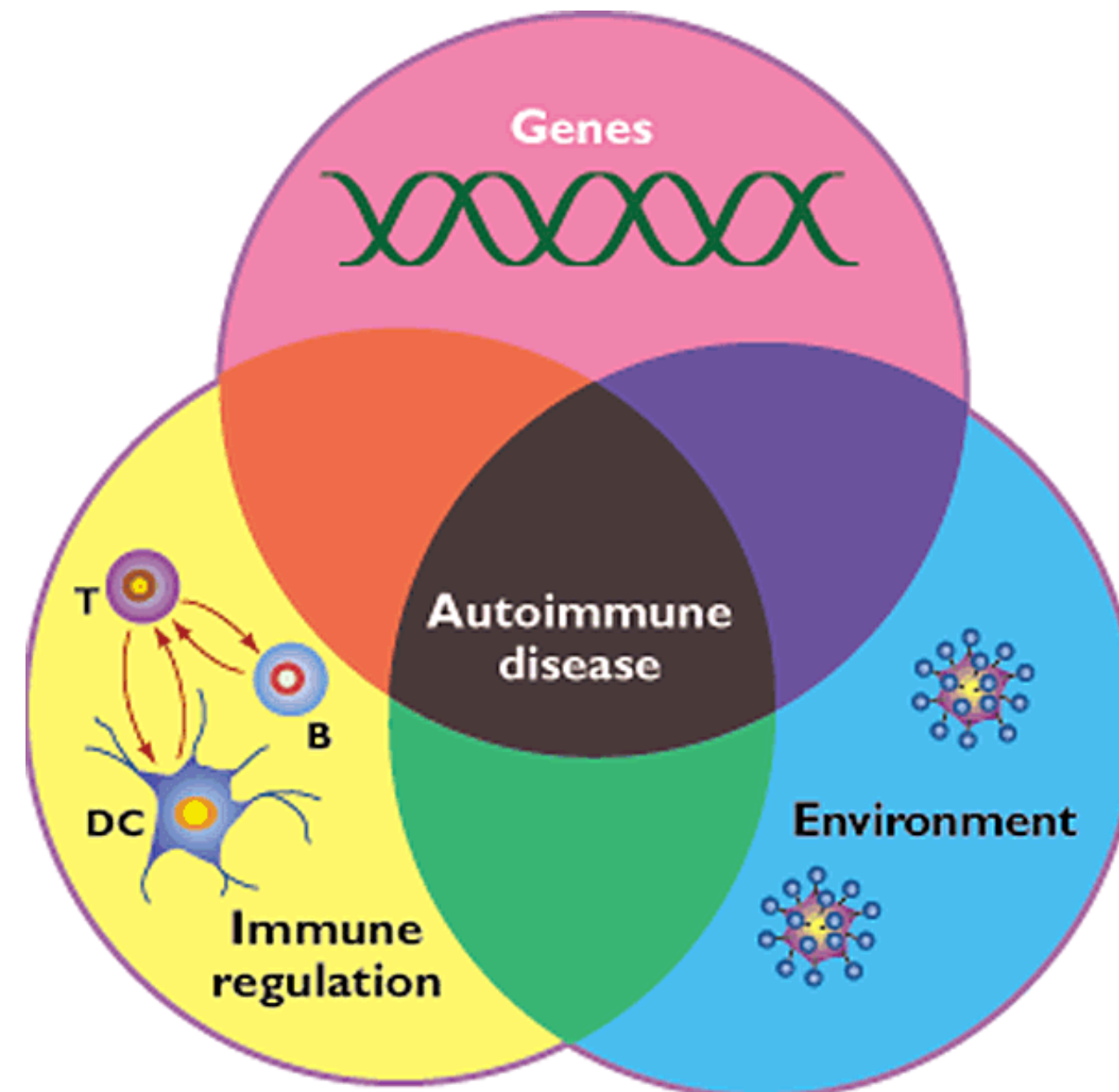
- A chronic inflammatory disease that occurs when the body's immune system attacks self-tissue and organs
- Organs: joints, skin, kidneys, blood cells, heart, lungs, and rarely brain



Overview: Who Gets Lupus

- Often affects women of childbearing age
- African American, Hispanic/Latino, Asians, Native Americans are 2-3 times more likely than Caucasian women to be affected
- Children, teenagers, men, and the elderly (less common) develop lupus

Overview: What Causes Lupus



Overview: Kidney Lupus

- Up to 60% of adults and 80% of children may develop kidney lupus later
- 25 to 50% of patients with lupus have abnormalities of urine or kidney function early in their disease course



Definition

**Kidney Lupus AKA Proliferative
Lupus Nephritis (LN)**



Definition

- Inflammation involving kidneys – causing injury



Kidney Lupus

- Most common severe complication of Lupus!
- Organ threatening (severe, rapid, progressive, irreversible damage)

The background of the slide features a warm, orange-toned pattern of autumn leaves and flowers. In the bottom right corner, there is a white line-art illustration of a heart inside a decorative frame.

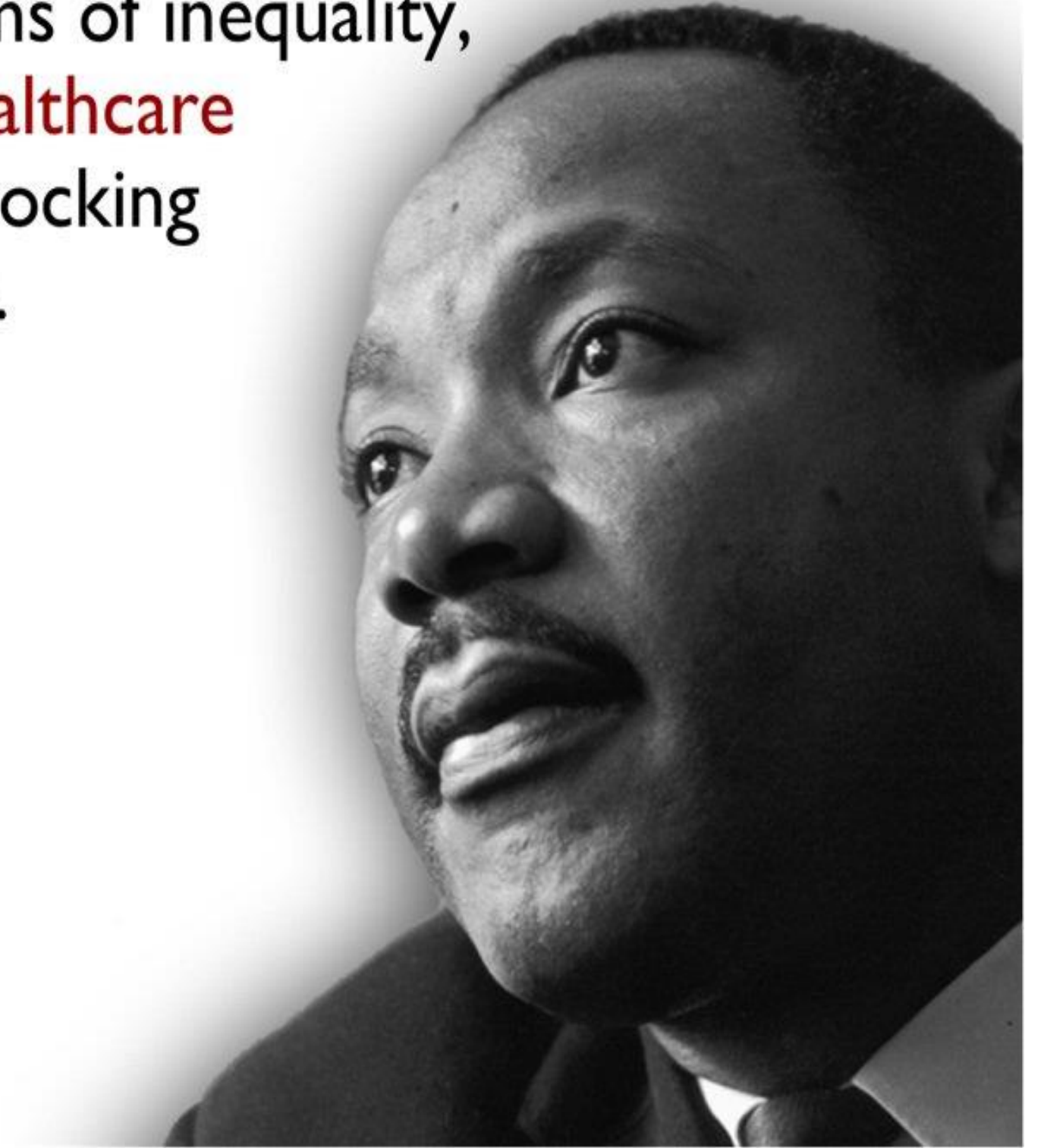
Our Mission: Kidney Lupus Care

- Raise awareness about the severity of kidney lupus, the need to diagnose and treat it early
- Tap into your power to become actively engaged in your lupus care
- Better understand the disease, seek good resources to manage the disease, and become advocates for resources to overcome barriers: reduce disparities and health inequity in health care

Mission & Purpose

Of all the forms of inequality,
injustice in healthcare
is the most shocking
and inhumane.

Dr. Martin Luther King, Jr.
March 25, 1966



We do this as one team,
One Team, One Fight against Lupus.

Thank-You.



If you want to go fast, go alone.
If you want to go far,

GO TOGETHER.

African Proverb

—African Proverb





Real change lives here